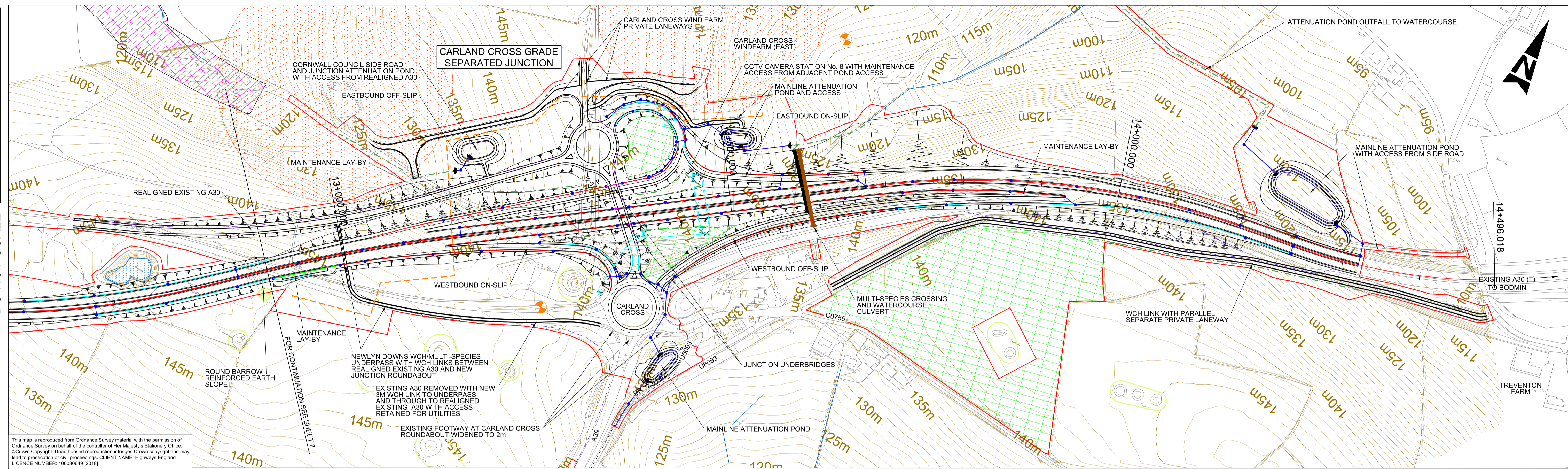


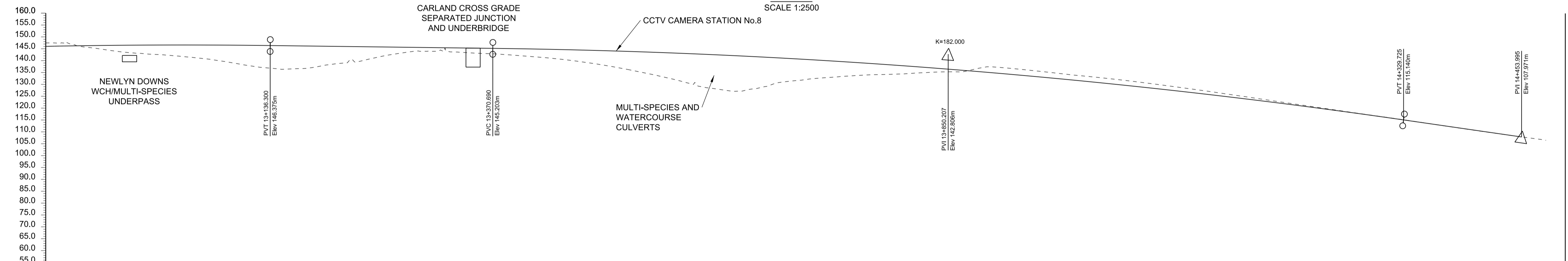
DO NOT SCALE



This map is reproduced from Ordnance Survey material with the permission of Ordnance Survey on behalf of the controller of Her Majesty's Stationery Office. © Crown Copyright. Unauthorised reproduction infringes Crown copyright and may lead to prosecution or civil proceedings. CLIENT NAME: Highways England LICENCE NUMBER: 100030649 [2018]

PLAN

SCALE 1:2500

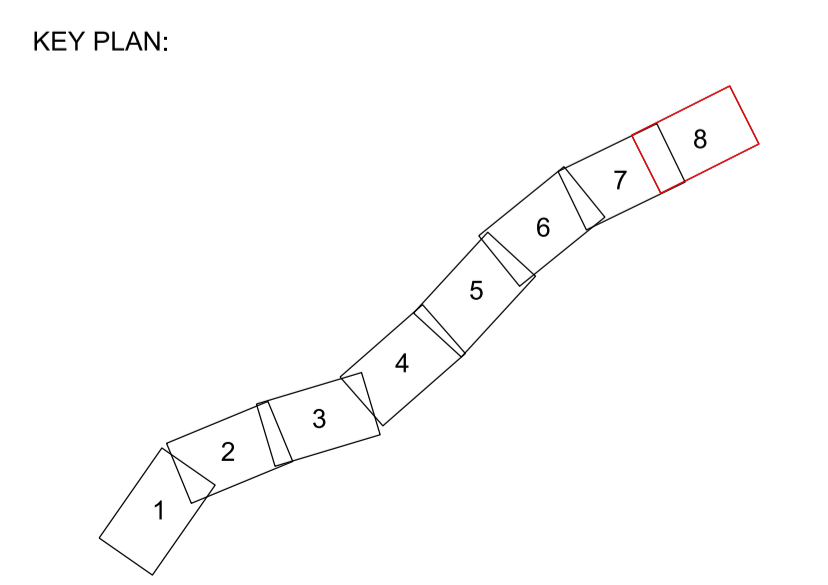


MAINLINE PROFILE

SCALE: 1:2500 HORIZONTAL; 1:1000 VERTICAL

VERTICAL ALIGNMENT	L=234.389m G=-0.500%															L=959.035m															L=124.271m G=-5.769%																				
HORIZONTAL ALIGNMENT	R=2040.000m L=188.105m					Ls=60.460m					Straight L=458.597m					Ls=120.920m					R=1020.000m L=349.608m					Ls=120.920m					Straight L=21.501m					R=720.000m L=253.975m															
EXISTING LEVEL	147.547	143.061	138.861	138.400	143.973	142.106	137.269	128.453	132.086	134.445	137.353	133.336	128.493	122.709	116.889	111.035	147.547	143.061	138.861	138.400	143.973	142.106	137.269	128.453	132.086	134.445	137.353	133.336	128.493	122.709	116.889	111.035	147.547	143.061	138.861	138.400	143.973	142.106	137.269	128.453	132.086	134.445	137.353	133.336	128.493	122.709	116.889	111.035			
PROPOSED LEVEL	146.023	146.546	146.520	146.057	145.557	145.033	144.097	142.612	140.577	137.993	134.860	131.177	126.944	122.162	116.831	111.086	146.023	146.546	146.520	146.057	145.557	145.033	144.097	142.612	140.577	137.993	134.860	131.177	126.944	122.162	116.831	111.086	146.023	146.546	146.520	146.057	145.557	145.033	144.097	142.612	140.577	137.993	134.860	131.177	126.944	122.162	116.831	111.086			
CHAINAGE	12+900.000	13+000.000	13+100.000	13+200.000	13+300.000	13+400.000	13+500.000	13+600.000	13+700.000	13+800.000	13+900.000	14+000.000	14+100.000	14+200.000	14+300.000	14+400.000	14+500.000	12+900.000	13+000.000	13+100.000	13+200.000	13+300.000	13+400.000	13+500.000	13+600.000	13+700.000	13+800.000	13+900.000	14+000.000	14+100.000	14+200.000	14+300.000	14+400.000	14+500.000	12+900.000	13+000.000	13+100.000	13+200.000	13+300.000	13+400.000	13+500.000	13+600.000	13+700.000	13+800.000	13+900.000	14+000.000	14+100.000	14+200.000	14+300.000	14+400.000	14+500.000

- GENERAL NOTES:
- FOR LEGEND REFER TO 1501.
 - ALL DIMENSIONS ARE IN METRES UNLESS NOTED OTHERWISE.
 - ONLY WRITTEN DIMENSIONS SHALL BE USED, DO NOT SCALE.
 - THESE PLANS SHOULD BE READ IN CONJUNCTION WITH OTHER PLANS AND APPLICATION DOCUMENTS IN PARTICULAR SCHEDULE 3 OF THE DEVELOPMENT CONSENT ORDER.
 - FOR DETAILS OF ALL ENVIRONMENTAL FEATURES AND PROPOSED MITIGATION REFER TO THE ENVIRONMENTAL MASTER PLANS.



Rev.	Date	Description	By	Chk'd	App'd	Auth'd
P01	24/08/18		AJ	RC	SW	SW
P02	24/08/18		AJ	RC	SW	SW
C01	24/08/18		AJ	RC	SW	SW

Suitability: **A3** | Drawing Status: **STAGE COMPLETED**

Client: **highways england** |

Project Title: **A30 CHIVERTON TO CARLAND CROSS**

Drawing Title: **FIGURE 2.1 GENERAL ARRANGEMENT PLANS SHEET 8 OF 8**

Scale	By	Checked	Approved	Authorised
1:2500	AJ	RC	SW	SW

Original Size	Date	Date	Date	Date
A1	24/08/18	24/08/18	24/08/18	24/08/18

Drawing Number	Originator	Volume	Revision
HA551502 - SW	ARP	LSI	C01

Location: **-DR - ZL -001509**